

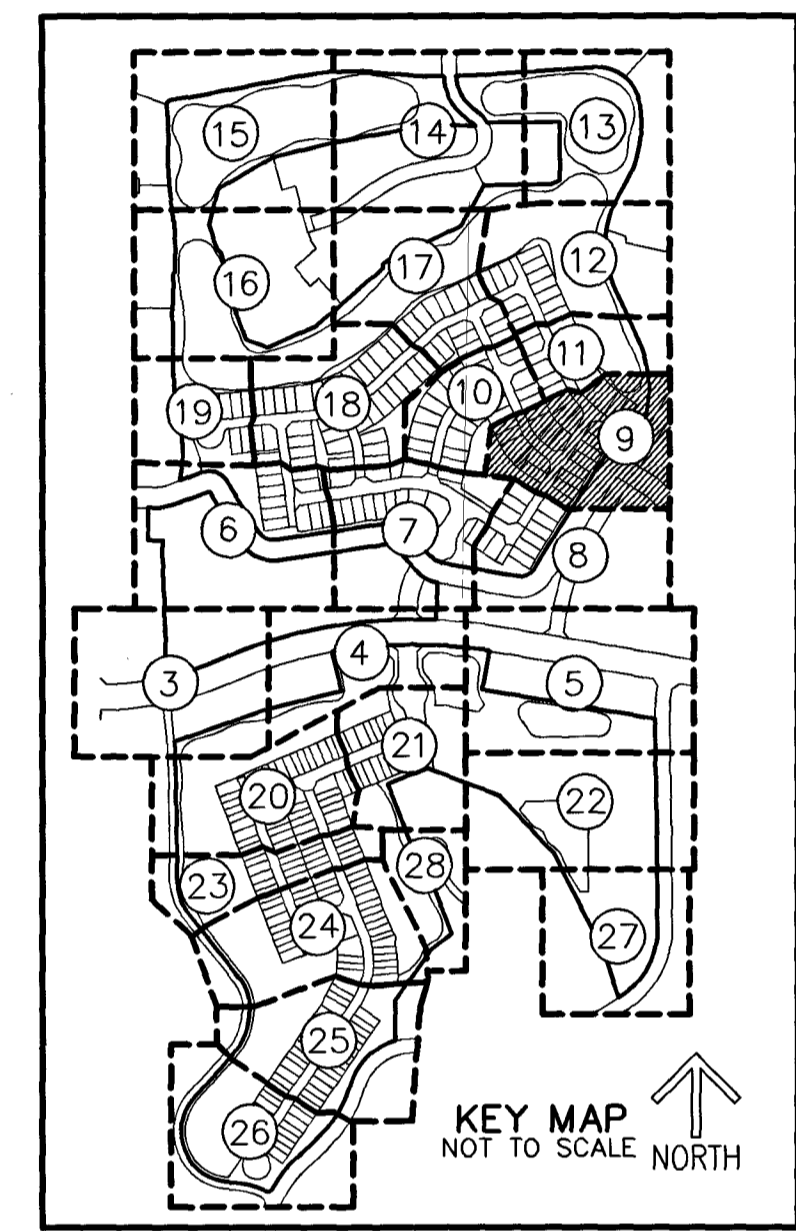
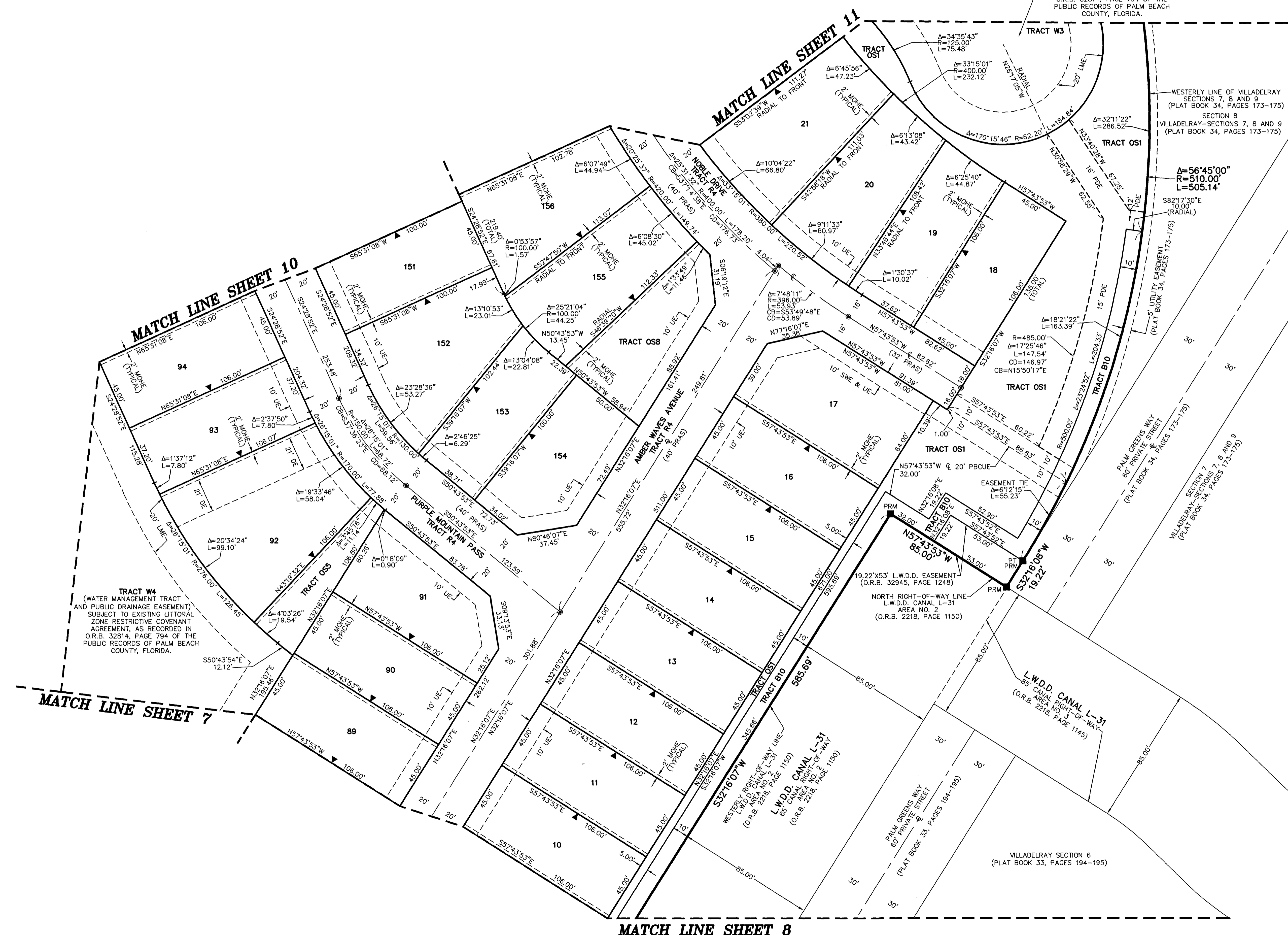
THIS INSTRUMENT PREPARED BY  
DAVID P. LINDLEY  
OF  
**CAULFIELD and WHEELER, INC.**  
SURVEYORS - ENGINEERS - PLANNERS  
7900 GLADES ROAD, SUITE 100  
BOCA RATON, FLORIDA 33434 - (561)392-1991  
CERTIFICATE OF AUTHORIZATION NO. LB3591

# DELRAY TRAILS AT VILLA DELRAY PUD

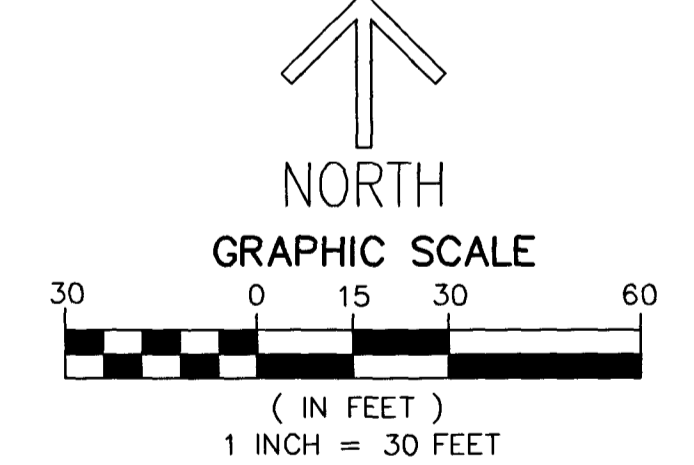
BEING A REPLAT OF ALL OF TRACTS "F", "G" AND "G-1", PLAT II VILADELRAY,  
AS RECORDED IN PLAT BOOK 30, PAGES 77 THROUGH 79 OF THE PUBLIC RECORDS OF PALM BEACH COUNTY, FLORIDA,  
TOGETHER WITH PORTIONS OF SECTION 11, TOWNSHIP 46 SOUTH, RANGE 42 EAST,  
ALL LYING IN SECTION 11, TOWNSHIP 46 SOUTH, RANGE 42 EAST, PALM BEACH COUNTY, FLORIDA

43

SHEET 9 OF 28



**NOTES**  
**COORDINATES, BEARINGS AND DISTANCES**  
COORDINATES SHOWN ARE GRID  
DATUM = NAD 83 (90 ADJUSTMENT)  
ZONE = FLORIDA EAST  
LINEAR UNIT = US SURVEY FEET  
COORDINATE SYSTEM 1983 STATE PLANE  
TRANSVERSE MERCATOR PROJECTION  
ALL DISTANCES ARE GROUND UNLESS OTHERWISE NOTED  
SCALE FACTOR = 1.000032158  
GROUND DISTANCE X SCALE FACTOR = GRID DISTANCE  
BEARINGS AS SHOWN HEREON ARE GRID DATUM  
NAD 83 (1990 ADJUSTMENT), FLORIDA EAST ZONE.



**LEGEND/ABBREVIATIONS**  
C - CENTERLINE  
Δ - DELTA (CENTRAL ANGLE)  
CB - CHORD BEARING  
CD - CHORD DISTANCE  
DE - DRAINAGE EASEMENT  
E - EASTING (WHEN USED WITH COORDINATES)  
FPL - FLORIDA POWER & LIGHT COMPANY  
L - LENGTH  
LB - LICENSED BUSINESS  
LMAE - LAKE MAINTENANCE ACCESS EASEMENT  
LME - LAKE MAINTENANCE EASEMENT  
LSE - LIFT STATION EASEMENT  
L.W.D.D. - LAKE WORTH DRAINAGE DISTRICT  
N - NORTHING (WHEN USED WITH COORDINATES)  
MOHE - MAINTENANCE AND OVERHANG EASEMENT  
O.R.B. - OFFICIAL RECORD BOOK  
PDE - PUBLIC DRAINAGE EASEMENT  
PRAS - PRIVATE RESIDENTIAL ACCESS STREET  
PBCUE - PALM BEACH COUNTY UTILITY EASEMENT  
PC - POINT OF CURVATURE  
PCC - POINT OF COMPOUND CURVATURE  
PNT - POINT OF NON-TANGENCY  
PRC - POINT OF REVERSE CURVATURE  
PT - POINT OF TANGENCY  
PUD - PLANNED UNIT DEVELOPMENT  
R - RADIUS  
SWE - SIDEWALK EASEMENT  
UE - UTILITY EASEMENT  
- INDICATES "ZERO" SIDE OF LOT LINE  
PRM - DENOTES SET PERMANENT REFERENCE MONUMENT  
4" x 4" x 24" CONCRETE MONUMENT WITH ALUMINUM DISK STAMPED "C&W PRM LB3591" UNLESS OTHERWISE NOTED  
PCP - DENOTES PERMANENT CONTROL POINT  
SET NAIL AND METAL DISK STAMPED "PCP LB3591"  
- DENOTES SET PERMANENT REFERENCE MONUMENT  
NAIL AND DISK STAMPED "PRM" LB 3591